



JULY 2016

Light in the Shadows

"Let your light shine before men, that they may see your good deeds and praise your Father in heaven." Matt. 5: 16

Being A Good Neighbor

"And who is my neighbor?" (Luke 10:29b)



The lawyer in Luke's Gospel was trying to trick Jesus. He asked what it was he needed to do to inherit eternal life. But Jesus, always knowing what's inside our hearts, gets him to answer his own question. The lawyer, well-versed in his Jewish tradition and faith, quotes the second part of the Shema Yisrael ("Hear O Israel, the LORD our God, the LORD is One") that includes the command-

ment to love your neighbor as much as you love yourself. Jesus told the lawyer he was correct and that all he had to do to get eternal life was to roll up his sleeves, get to work and start putting other people's needs ahead of your own.

If you continue reading in Luke, you will get Jesus' parable of the Good Samaritan. Given that you probably are quite familiar with this parable, you already know how it ends. Jesus asked the lawyer which of the three proved to be a neighbor to the man in need. The lawyer, once again, answers his own question: "The one who showed him mercy." Jesus tells the lawyer a second time that he needs to go to it and lend a hand to those in need.

Just a few weeks ago, in June, clergy from many denominations and faith tradi-

tions were invited for breakfast by the Upper Valley Haven social services facility in White River Junction. There I heard stories from each of the various faith communities that were reaching out and being a neighbor to those who often have nowhere else to turn for help. As I shared about

"As I shared about St. Luke's own outreach ministries, what became clear to me was that reaching people with help and hope means getting your hands dirty. It's hard work! It takes a lot of commitment."

—Rev. Heidi L. Edson

Continued on page 2



All Systems Go For St. Luke's 78th Annual August Supper

The 78th Annual August Supper will be held (rain or shine) on **Saturday, August 6** under tents on the beautiful back lawn at St. Luke's Church with continuous seating from **5:00 p.m. to 7:00 p.m.** A true gourmet banquet will be offered that includes: baked ham, roast beef, turkey with potato salad, broccoli salad, coleslaw, jellied salads, cold soups, baked beans, specialty pasta salads, fresh fruit cup, tossed green salad, beverages and delectable desserts from our famous kitchens. All you can eat for \$15 for adults and \$7.50 for children ages 6 to 12. For reservations to dine at a special time call 875-4031.



We invite you, family, friends, neighbors and summer visitors to come celebrate the best of Vermont. In addition, a "Silent Auction" of goods and services will be ongoing during the supper. See page 3 for more details.

From the Senior Warden

July At St. Luke's



The major focus for the St. Luke's community this month is an Open House and Tour of St. Luke's Church being held in conjunction with the town of Chester's 250th Anniversary Celebration—Saturday, July 16 (10:00 a.m.-2:00 p.m.) and Sunday, July 17th (Noon-2:00 p.m.) Lemonade and cookies will be offered to our

guests and visitors on both days. A "Scavenger Hunt" is being planned for children on the Saturday of that weekend, thanks to Lillian Willis. A special thank you to both Lillian Willis and Lew Watters, who have been compiling information about our church's history and its long ties to the Chester community. Several parishioners have volunteered to be docents for this event and there will be a training session for them on **Tuesday, July 12, 9:00-10:30 a.m.** in the church.

In anticipation of this event and to present our sanctuary in its best light, we have scheduled a special workday to "Spruce-Up the Sanctuary" on Saturday, **July 9 from 9:00 a.m.-Noon** (lunch to be provided) ...focusing on cleaning the oak pews, railings and altar. Lots of soft, cleaning rags, helping hands and elbow grease are needed! If you haven't signed-up yet, please do. The sign-up sheet is located on the guest book podium at the rear of the church.

All of this preparation (including the many outside renovations that have been happening this summer) will be time well spent as we look forward to making plans for St. Luke's own 150th Anniversary Celebration in the year 2018.

Meanwhile, I hope everyone else is enjoying these warm, sunny days and all the beauty of God's creation surrounding us here in Vermont, as much as I am.

Many blessings!

Your sister in Christ,
Pat Fromberger

Being A Good Neighbor

(Continued from page 1)

St. Luke's own outreach ministries, what became clear to me was that reaching people with help and hope means getting your hands dirty. It's hard work! It takes a lot of commitment. When the effort is done together in community, the blessing (I think) is even greater.

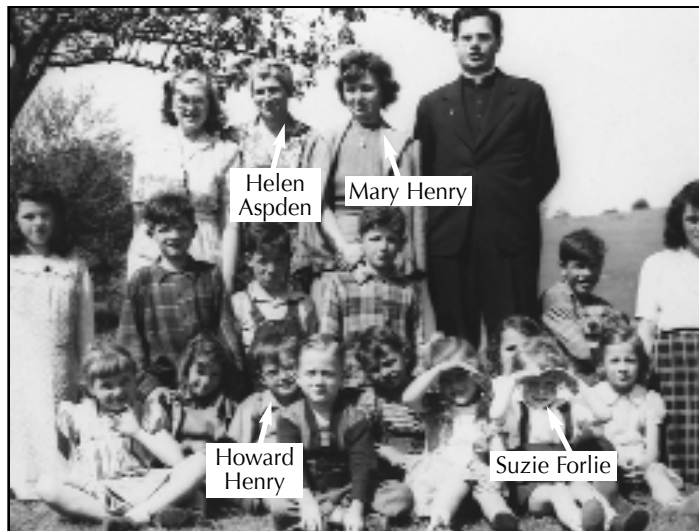
As I read this parable of Jesus, I can't help but wonder how richer and more rewarding (more Kingdom-like!) it would have been if all three by-passers—the Priest, the Levite, and the Samaritan—had worked together to be a neighbor to the man in need and stopped to lend a hand. Good neighbors can be hard to find and, goodness knows, our communities and world sure could use some.

In Christ together,
Heidi +



*** August Supper Survey ***

St. Luke's parishioners will find a link to this survey on our webpage under "Special Events." To help us know how you can help with the supper, please print the survey, complete it and send to: **Kathryn Wright, 5 Taylor St., Bellows Falls, VT 05101** or hand it to her at church. Note: We especially could use more desserts. Monetary donations are always welcomed.



History Quiz #1 Answer

Last month we included three history quizzes in the June issue of *Light in the Shadows*, but received only two responses from our readers who both successfully identified Mary Henry and Helen Aspden in this late 1940's – early 1950's photo of St. Luke's Vacation Bible School. [The four persons are identified above.] We believe The Rector in this photo is John M. Mills.

AUGUST DEADLINE:

JULY 29th

Send all announcements, articles,
photos, events, to:

Pat Fromberger, 180 Gates Rd., Andover, VT 05143
panjoe@vermontel.net

August Supper Silent Auction Returns

Along with the upcoming August Supper on Saturday **August 6th from 5:00 p.m. to 7:00 p.m.**, Lew Watters and Sean Buchanan will once again provide an opportunity for parishioners and guests to deliberate and bid over a wide choice of items that will be available thanks to the generosity of St. Luke's members. We will have our familiar white canopy with tables covered in a variety of goods and services.

As in the past, we welcome your donations of useful items, antiques, works of art, services, or any ephemeral worthy of the day. You can call or email us with your offerings and to arrange pickup or delivery: Lew's phone: 875-2114 or email lewbon@vermontel.net; Sean's phone: 875-5246 or email buchanansean@hotmail.com. [Bonnie Watters has already donated one of her dolls, "Cyrena" to this year's auction. See photo.] Remember the more interesting the items the more interest and bids during the event. Auction donation/bid forms are available in Willard Hall.

Last year's auction raised about \$850 which was all profit toward our church budget and our mission. You can read more about last year's success in the September 2015 *Light in the Shadows* which is posted on our church website, as well as information on the supper on the Special Events page. Remember to remind and invite your friends and family to the 78th Annual August Supper on Saturday, August 6th from 5:00 p.m.-7:00 p.m, rain or shine under the tents on the church lawn. —*Many thanks, Lew Watters & Sean Buchanan*



A New Walkway Garden Bed Is Created!

As a result of a brainstorm idea that came out of the May Vestry Retreat to make St. Luke's entrance more attractive to visitors and potential worshippers, a new walkway garden bed was created. The original plan was to put flower boxes along the walkway, but then Lillian Willis, suggested, "Why not put in a permanent garden bed with perennials donated by parishioners?" It wouldn't cost much (only the cost of mulch) and would be easier to maintain. Not one to let "grass grow under her feet," Lillian, along with John & Alison DesLauriers, got the plot tilled and planted all in seven days. And here is the beautiful result! What a superb gardening team! Be sure to let them know how grateful we all are for this outstanding achievement.



Garden tilled and ready for plants on June 2

The super gardening team of John & Alison DesLauriers and Lillian Willis.



A recent view of completed walkway garden.

June Vestry Meeting Highlights

The Focus of the June Vestry meeting featured spirited review of the past year's activities and enthusiastic plans for the future regarding the education of both adult and children at St. Luke's.

- **Sunday School.** Jessica Buchanan reported on the past year of Sunday School, where she took the lead on craft activities and Sean Whalen led singing and Bible stories. She explained that the curriculum supplied was not of great benefit since most of the children were so young, and she praised the dedication and invaluable care given to the youngest participants by Magali Stowell Aleman. In an effort to broaden the educational offerings and non-parent instructors and to free up the parents to attend church, the next year of Sunday School, which will start September 11, will feature two weeks of Bible stories and singing, one week of outreach projects, and one week where members of the Vestry and congregation will share Bible stories, projects, or their personal "ministries" with the children.

- **Adult Formation.** Heidi reported on the thematic studies for Wednesday and Sundays, and Pat Fromberger reported on the activities of the "Lunch Bunch," currently a group of eight participants who meet weekly on Mondays to share a brown bag lunch, books (relating to the Christian faith and our spiritual journeys) and to pray. The group has finished 10 books since the program was revitalized in 2013 under Rev. Carole Wageman's leadership. They are now reading "An Altar in the World," by Barbara Brown Taylor.

- **Maintenance and Construction Updates.** John DesLauriers expects the paving near the new ramp and the walk to Willard Hall to be accomplished shortly. Painters have already started scraping and spot priming the church. The decision on how to proceed with repair or replacement of the church doors is on hold until we see how the ramp and new threshold work.

- **Episcopal Church Welcomes You Sign.** A new metal sign featuring the familiar shield design will be ordered and installed in front of the church to welcome all to St. Luke's.

- **Rector's Report.** Heidi will offer the *Enriching Our Worship* liturgy two or three times during the month of July at the 10:00 a.m. service and is researching different options for the Prayers of the People. She has ordered three new robes for the acolytes and is seeking new volunteers for that position.

- **Trainings.** Janet Hunter and Marti Assenza have signed up for Pastoral Care Training this fall. A number of Vestry members have committed to take Safe Church Training this fall put on by the Diocese of Vermont.

- **First Aid Kits.** Two new kits are available at the back of the church and on the shelf over the kitchen sink in

Willard Hall—where there is also a blood pressure cuff. Thank you to Eileen Widger for providing these materials.

- **250th Chester Celebration.** Tours of the church will be offered 10:00 a.m.-2:00 p.m. on Saturday July 16 and after church until 2:00 p.m. on Sunday July 17. Anyone interested in being trained as a docent should contact **Lillian Willis** to sign up for a shift. Training will take place on Tuesday, **July 12, 9:00-10:30 a.m.** at the church. On the celebration weekend, during tour times, we will also offer a scavenger hunt for kids and serve lemonade and cookies.

- **Next Vestry Meeting:** Monday, August 1, Focus topic is Worship: Altar Guild and Music. [The Vestry will not meet in July.] —**Lillian Willis, Secretary/Clerk**



Answer To History Quiz #2

The young lady, circled in the center of this photo we featured last month is **Pearl May Willard** (1880-1947) whose photograph hangs on a wall in Willard Hall just to the left of the doorway leading to the stairwell up to the sanctuary. It was through a generous bequest in 1949 by Miss Pearl M. Willard, a life-long member of St. Luke's, that made it possible to finish excavating the basement of the church to provide a meeting hall with kitchen facilities, classrooms, and a chapel.



This is the photo of Pearl Willard that is hanging in Willard Hall.

How long has it been since you heard from God? However long it's been, it is not because God has forgotten you. God has a plan for your life and (unless you hear differently from a burning bush) that plan is that you be yourself, the beloved child whom he created, an indispensable child of his kingdom. —*Forward Day By Day*, June 2009.

Continue reading at top of page

A Day Of Thanks: Recognition Sunday & Annual Parish Picnic

On Sunday, June 5, the St. Luke's community took the opportunity at both worship services that morning to express appreciation and gratitude to all those members who participate as leaders and lay ministers throughout the year. Small tokens of thanks were presented by the Senior Warden, Pat Fromberger along with our Rector, Rev. Heidi Edson to all the lay ministers who served as lectors, prayers and chalice leaders, ushers/greeters and coffee hour hosts/hostesses this past year. Gift certificates were given to the Church School leaders: Sean & Ashley Browning-Whalen, Jessica Buchanan, Bonnie Watters and Magali Aleman. Adelaide Johnson expressed her special thanks to her team of dedicated Altar Guild members: Anita Wright, Marcia Clinton, Eileen Widger Georgiana Cheney and Janet Hunter. (You can read about this team in the June LITS.) Jean Hancock thanked her faithful acolyte crew of Marcia Clinton, Sally Hoover and Sophie Buchanan. Ashley Paine gave thanks and a small token gift to the choir members.

Immediately after the 10:00 a.m. service, everyone proceeded down to Willard Hall for the Annual Parish Picnic which had to be held indoors, due to the rain. The rain didn't faze our two barbecue experts, Lew Watters and John DesLauriers and their able assistant, Alison Des-Lauriers—who kept a steady supply of burgers and franks coming to the buffet table inside. Anticipating the inclement weather forecast for that day, Lew & John set up a small tent outdoors assuring that all the meats could be grilled in the traditional manner. Thanks also go to Janet & Rick Hunter for coordinating the whole event and to everyone who contributed delicious side dishes and desserts.



A fabulous array of salads and other side dishes to choose from the Parish Picnic buffet table



Leona & Saul Hensel-Whalen were happy just eating their hot dogs.

Someone 'With Skin On'

My 3-year-old nephew was having a hard time falling asleep at Grandma's house, so my mom lay down beside him for a while. As she started to ease out of the room, his eyes flew open. "You're safe," she reminded him. "Jesus is always with you."

"I know, Grandma," he protested, "but I want someone with skin on!"

That reminded me of a quote by theologian Frederick Buechner: "Compassion is the sometimes fatal capacity for feeling what it is like to live inside somebody else's skin." God came to us as Jesus—someone "with skin on"—so we would know he understands what it's like to live inside our skin. Now as Jesus' body in the world, we're often called on to be someone "with skin on" to others. Indeed, we're to show them such compassion that we could just as well be wearing their skin.

—Heidi Mann: *The NewsletterNewsletter*; July 2014



The unbeatable barbecue team of John & Lew under their protective red tent.

The Outreach Corner

Operation Christmas Child July Update

Thank you very much to all of the people who came to help us at the June Operation Christmas Child Workshop. We got a lot of things done and ready for the shoeboxes. Our next **OCC Workshop** will be on **Friday, July 22 from 2:00-6:00 p.m.** in Willard Hall. We will be working on making little felt animals, more CD toy tops, and board games. Please join us for fun, fellowship, and food. No special talent or skill is needed. We will be coloring and gluing. I hope to see you there.

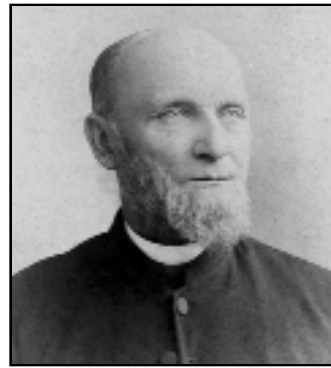
Also, many thanks to all of the people who have given donations of items to put in the shoeboxes and recyclable items. Right now, we are in need of many covers to finish making games, especially laundry detergent, mouthwash, and oatmeal or yogurt container type covers. Any of these lids that you can save for us will be greatly appreciated. There is a special box for all OCC donations in Willard Hall.

Are you a knitter or crocheter? I am looking for anybody who would like to knit or crochet items for the shoeboxes. I have lots of wool yarn and many easy patterns. If you would like to help, please see me at church.

Special Note: I am having a yard sale on the July 2nd-4th weekend from 10:00 a.m.-5:00 p.m. at my house on Grafton Street in Chester. It is a "make an offer" yard sale and ALL proceeds will go towards the Operation Christmas Child ministry. —*Cindy*

Write To Our Soldiers

We ask you to please continue to support our soldiers with your messages and encouraging words. There is a basket of note cards available in Willard Hall for this specific purpose. The 12 soldiers we are currently supporting never receive any mail. So even a card with a few lines saying, "We are thinking of you" or "Have a great day" mean so much to them. You can also choose to write notes at home and bring them to church to be mailed with our package of letters. One of our parishioners does this and adds small word games or puzzles. What a great idea!



Answer To History Quiz #3

Pictured above are the **Rev. Alonzo B. Flanders** (the first Rector to be called to St. Luke's) and his wife **Sarah**. (Sarah Ann Ide, who was born in Windsor, VT, a daughter of Simeon Ide.) The Rev. Flanders was born in Chelsea, VT, December 6, 1829, and acquired his early education at Exeter, N. H. Having studied for the ministry with Bishop Carleton C. Chase, of this state, he was duly ordained at Claremont, N. H., in June, 1853.

For twelve years subsequently he was rector of St. Paul's church at Wickford, R. I. Enlisting in the Fourth Rhode Island Volunteer Infantry, at the outbreak of the Civil War, he served as chaplain at the front for two years, during which time he was twice stricken with malarial fever. The second attack was so severe that his life was only saved by the devotion of his wife, who bravely made her way through the lines and nursed him back to health. After his return home, on the advice of his physician, he went to Vermont, in the hope of benefiting his health by a stay in the mountains.

In March 1868, he settled in Chester, VT, where he had accepted the call to be a resident missionary for one year. He continued as Rector for fourteen years from 1868-1882. Services at this time were held on the third floor of the Chester Academy (currently the Historical Society Building.) On Easter Day, April 12, 1868, a parish was organized under the provisions of the old Canons of the Diocese, to be known as St. Luke's Parish, with Merrick Wentworth and Clements Leland as Wardens, and with ten communicants. On September 5, 1868, Bishop Bissell visited the parish and confirmed five persons. Soon after the Bishop's visit, plans were initiated for the building of a church.

After a short residence at White River Junction, VT, Rev. Flanders moved to St. Albans, VT where he became the Rector of St. Luke's Church. At his death, which took place in April, 1898, he was one of the oldest and most highly esteemed ministers of Vermont. His degree of Doctor of Divinity was conferred on him by Vermont University. He was a member of the standing committee of the diocese, an examining chaplain, and served as delegate to the General Convention several times.

Source: <http://vermontcivilwar.org/get.php?input=56722>

"Prayer is not a spare wheel that you pull out when in trouble; it is a steering wheel that directs us in the right path throughout life." —*Anonymous*

Enriching Our Worship Liturgy

During the month of July at St. Luke's Church we will be using a form for worship at the 10:00 a.m. service only, that comes from the Episcopal Church's new resource, *Enriching Our Worship*. The St. Luke's community was first introduced the EOW liturgy, Eucharistic Prayer 1, during Last Pentecost in November 2015, when Rev. Thad Bennett was serving as our Interim Rector. Then again in April 2016, The Rev. Bruce L. MacDuffie, who served as a supply priest for 2 Easter and 3 Easter, introduced us to EOW Eucharistic, Prayer 3. In order to give the St. Luke's community a longer exposure to this new liturgy, Rev. Heidi announced at the June Vestry meeting that she would like to use the **EOW Eucharistic, Prayer 1** liturgy for the entire month of July with the exception of Sunday, July 17th, when the Open House is being held in conjunction with Chester's 250th Celebration.

The language of this liturgy is much the same as found in the BCP, but where possible gender references to God have been removed and new insights into the relationship between humans and God are expressed. EOW is part of an ongoing process of listening to what the Spirit is saying to the Church through the diverse experience of those who gather to worship and to celebrate the sacramental rites which fashion and identify us as the People of God.

Enriching Our Worship is not intended to supplant the Book of Common Prayer, but rather to provide additional resources to assist worshipping communities wishing to expand the language, images and metaphors used in worship. In some cases the canticles and prayers represent the recovery of ancient biblical and patristic images, such as the identification of Christ with Wisdom, and in other cases images which speak of God in other than the familiar masculine terms which have been so much a part of our liturgical prayer. Expanding our vocabulary of prayer and the ways in which we name the Holy One bear witness to the fact that the mystery of God transcends all categories of knowing, including those of masculine and feminine.¹

¹ Source: *Enriching Our Worship 1* Preface: www.churchpublishing.org

St. Luke's Financial Information

	<u>May 2016</u>	<u>May Budget</u>	<u>Annual Budget</u>	<u>% Monthly Budget</u>
Pledge/Plate Income	\$ 8,364	\$ 7,660	\$ 91,920	109.1%
Other Oper. Income	\$ 199	\$ <u>1,734</u>	\$ <u>26,707</u>	11.5%
Restricted Income	\$ <u>4,833</u>			
TOTAL INCOME	\$ 13,396	\$ 9,394	\$ 118,627	143.6%
Regular Expense	\$ 12,935	\$ 12,508	\$ 133,400	103.4%
Restricted Expense	\$ <u>8,722</u>		\$ <u>11,000</u>	
TOTAL EXPENSES	\$ 21,657	\$ 12,508	\$ 144,400	173.1%
NET INCOME/(LOSS)	(\$ 8,261)	(\$ 3,114)	(\$ 25,773)	265.3%

Pledge & Plate Income exceeded budget projections, for which we all give thanks. Don't be alarmed at our \$8,261.37 deficit for the month, which represents the amount we spent on the Maintenance Project during May. In June we will move the \$9,400 in unspent insurance proceeds from the balance sheet (as a liability) to the profit-and-loss statement (as restricted income) and it will cancel out this month's deficit.

—Kathryn Wright, Treasurer



Meetings & Events

WEEKLY

• **Adult Formation Study:**

Sundays, following the 10:00AM worship service each week from **11:35AM-12:30PM** in the Rector's Study. We will continue our study on Henri Nouwen's book, "Can You Drink the Cup." All are welcome to join us.

• **Lunch Bunch Book Study:**

Mondays, **Noon-1:15PM** in Willard Hall for a bag lunch, discussion & prayer. We are reading, *An Altar in the World*, by Barbara Brown Taylor. All are welcome.

• **Mid-Week Morning Prayer and Adult Formation Study:**

Wednesdays at **9:30AM** in sanctuary chapel for Morning Prayer. **10:30AM**, in Willard Hall for Adult Study on "Ecclesiastes" All are welcome to join us.

• **St. Luke's Choir Is On Hiatus:**

The choir is taking a summer hiatus and will resume rehearsals at the end of August. If you have a musical talent you wish to share during the 10AM services this summer (i.e. singing or playing a musical instrument), please contact Ashley Paine, Church Musician at (802) 886-7941. She would love hearing from you.

LESS THAN WEEKLY

• **Docent Training For 250th:**

Tuesday, **July 12, 9AM-10:30AM** in the church. Let Lillian Willis know if you plan to attend (875-1340).

• **St. Luke's Open House/Tour:**

Saturday, **July 16, 10AM-2PM** & Sunday, **July 17, Noon-2PM**. 'Scavenger Hunt' on Saturday morning. Photo displays and Docents will lead tour of sanctuary and answer questions both days. Lemonade & cookies will be served.

• **Operation Christmas Child Workshop:**

Friday, **July 22nd, 2:00PM-6:00PM** in Willard Hall. We will be making toys and other items for the OCC shoe boxes. Refreshments. See page 6 for more details.

JULY CELEBRATIONS

Birthdays:

2 Pat Ballou	18 Jean Hancock
2 Marc DesLauriers	22 John DesLauriers
4 Linda Fawcett	24 Annemarie Sexton
6 Rachel Guerra	28 Ann Summers
8 Zoe Meyer	30 James Salisbury
8 Kathryn Wright	31 Jim Littrell
14 Adelaide Johnson	
16 Elsie Sharon	
18 Georgiana Cheney	

Anniversaries:

10 John & Sally Hoover
10 Walter & Elsie Sharon
14 Alan & Deb Brown
28 Chris & Kat Meyer
31 Sean & Jessica Buchanan

“St. Luke’s
is an
intentional
Christian
community,
deepening faith
and
broadening
love.”

✠ WORSHIP SCHEDULE ✠

July 3	VII PENTECOST (Proper 9)
8:00 AM	Holy Eucharist, Rite I
10:00 AM	Enriching Our Worship, Prayer I
July 10	VIII PENTECOST (Proper 10)
8:00 AM	Holy Eucharist, Rite I
10:00 AM	Enriching Our Worship, Prayer I
July 17	IX PENTECOST (Proper 11)
8:00 AM	Holy Eucharist, Rite I
10:00 AM	Holy Eucharist, Rite II
July 24	X PENTECOST (Proper 12)
8:00 AM	Holy Eucharist, Rite I
10:00 AM	Enriching Our Worship, Prayer I
July 31	XI PENTECOST (Proper 13)
8:00 AM	Holy Eucharist, Rite I
10:00 AM	Enriching Our Worship, Prayer I

☛ **CHURCH SCHOOL:** Church School will resume in September.

St. Luke’s Episcopal Church

The Rev. Heidi L. Edson, Rector
313 Main Street, Chester, VT 05143 • Office Phone: 875-6000
www.stlukesepiscopalvt.org

Light in the Shadows

St. Luke’s Episcopal Church
P. O. Box 8, Chester, VT 05143
Return for ADDRESS CORRECTION
Or if Undeliverable

